

#### D Type

- Standard industrial type universal joint with pin & block design
- The D Type is ideal for applications with angles up to 25° and speeds of up to 1,750 RPM
- Available in your choice of round, hex, splined, or keyway bore
- Boot retaining grooves are standard. See page UJ-11 for selection of on-site replaceable universal joint boots
- Lubrication is required for optimal wear – boots and lubricant extend universal joint life



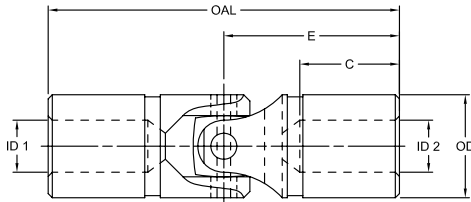
D Type

#### HD Type

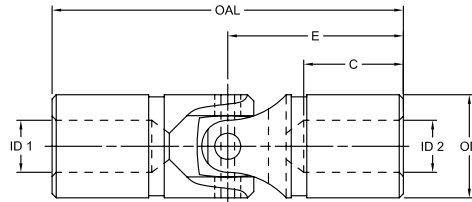
- The HD Type universal joint has induction hardened yoke ears provide longer life than standard D Type
- The hardened yokes are matched fitted with the universal components
- HDD and HDDX drive line assemblies can also be provided to increase life of your drive line or drive shaft
- Available in your choice of round, hex, splined, or keyway bore
- Boot retaining grooves are standard. See page UJ-11 for selection of on-site replaceable universal joint boots
- Lubrication is required for optimal wear – boots and lubricant extend universal joint life



HD Type



D Type



HD Type

#### D and HD Type Dimensional Data

Size	OAL	E	C	Std Bore	ID1 - ID2						OD	Static*		Weight		
					Main Pin Height	Bore Depth	Max Bore No Keyway	Max Bore with Keyway	Max Square/ Hex Hole <sup>3</sup>	Breaking Torque		Solid lbs	Bored lbs			
										in				mm	in	Nm
D-1	D-1B	1.75	.88	.56	.19	.25	6	–	–	.19	4	.38	110	12	.05	.04
D-2	D-2B	2.00	1.00	.62	.25	.38	9	–	–	.25	6	.50	378	42	.10	.08
D-3	D-3B	2.25	1.12	.68	.31	.50	12	–	–	.31	8	.62	540	61	.17	.15
D-4	D-4B	2.68	1.34	.88	.38	.62	15	.44	11	.38	9	.75	768	86	.30	.25
D-5	D-5B	3.00	1.50	.88	.44	.69	17	.50	12	.44	11	.88	1,176	132	.45	.37
D-6	D-6B	3.38	1.68	1.00	.50	.75	19	.56	13	.50	12	1.00	1,560	176	.65	.55
D-7	D-7B	3.50	1.75	1.00	.56	.88	22	.62	15	.56	14	1.12	2,880	325	.85	.71
D-8	D-8B	3.75	1.88	1.06	.62	1.00	25	.75	18	.62	15	1.25	5,220	589	1.11	.94
D-10	D-10B	4.25	2.12	1.18	.75	1.12	28	.88	21	.75	19	1.50	7,920	895	1.80	1.50
D-11	D-11B	5.00	2.50	1.38	.88	1.25	31	1.00	25	.88	22	1.75	10,680	1,206	3.00	2.50
D-12	D-12B	5.44	2.72	1.50	1.00	1.50	38	1.19	30	1.00	25	2.00	15,600	1,762	4.20	3.50
D-13	D-13B	7.00	3.50	2.00	1.25	1.75	44	1.50	39	1.12	28	2.50	33,120	3,742	8.50	7.20
D-14	D-14B	9.06	4.53	2.75	1.50	2.00	50	1.81	48	1.38	35	3.00	65,400	7,389	16.00	13.00

- Notes:
- \* indicates: This is not a recommended operating torque.
  - 3 indicates: Square and hex bores are measured across the flats.
  - Operation of all universal joints is determined by the angle/speed combinations of the application. Consult Lovejoy Engineering for specific limitations and recommendations.
  - Applications that fall outside the limitations of these tables should be referred to Lovejoy Engineering for assistance.